



SPECIAL FEDERAL DATA RELEASE EDITION

September 2019

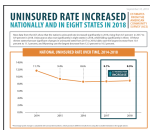
Announcements

U.S. Census Bureau Releases 2018 Uninsurance Data from the CPS and ACS - More to Come



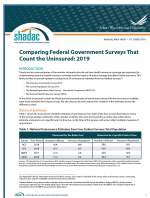
On [Tuesday, September 10th](#), and [Thursday, September 26th](#), the U.S. Census Bureau released estimates for 2018 from two large-scale federal surveys: the American Community Survey (ACS) and the Current Population Survey (CPS). Both are key sources of data on income, poverty, and health insurance coverage, in addition to a range of other economic and demographic characteristics, for the U.S. population. [Estimates from both surveys](#) show a significant rise in the national uninsured rate for 2018. Breakdowns in uninsurance estimates by characteristics such as age, race/ethnicity, education level, and more will be released next month on Thursday, October 17th.

Register Now for Annual Data Release Webinar on October 1st with SHADAC and the U.S. Census Bureau



Join experts from SHADAC and the United States Census Bureau for a [webinar](#) tomorrow, October 1st, as they discuss findings on health insurance coverage in the United States from the newly released 2018 Current Population Survey (CPS) and American Community Survey (ACS). SHADAC and the Census Bureau will be discussing 2018 insurance coverage estimates at both the national and state level, the differences between the two surveys' estimates and when to use which survey, as well as how to access the data via data.census.gov and via SHADAC state tables. [Register now](#) to join the conversation!

Forthcoming: SHADAC Brief Comparing Federal Government Surveys that Count the Uninsured



With the release of new insurance coverage estimates, SHADAC will be updating our annual technical brief "Comparing Federal Government Surveys that Count the Uninsured." This brief provides comparisons of uninsurance estimates from five federal surveys: The American Community Survey (ACS), the Current Population Survey (CPS), the Medical Expenditure Panel Survey – Household Component (MEPS-HC), the National Health Interview Survey (NHIS), and the Behavioral Risk Factor Surveillance System (BRFSS). We update this brief each year to include current and historical national estimates of uninsurance along with the most recent available state-level estimates from these surveys. We also discuss the main reasons for variation in the estimates across surveys. Access last year's brief [here](#), and stay tuned for the 2019 brief release.

Also Coming Soon: SHADAC's Annual County-Level Uninsured Tables for 2018

Stay tuned for the county-level uninsurance tables released each year by SHADAC. Using uninsurance estimates from the [American Community Survey \(ACS\)](#), the tables will include 2018 rates of uninsurance



for all states and territories and for all counties with a population greater than 65,000. The tables will also show changes in uninsurance from 2017 to 2018 and indicate state-level uninsurance rates by characteristics (e.g., age, race/ethnicity, and poverty level). Click [here](#) to access SHADAC's ACS county-level uninsured tables for data year 2017, which include a comparison with 2016.

Newly Available Data

2018 BRFSS Public Data Files for Estimates of Health Behaviors and Health Outcomes Now Available

The [2018 Behavioral Risk Factor Surveillance System \(BRFSS\) Data Set](#) has been released by the Centers for Disease Control and Prevention (CDC). The BRFSS collects state data from all 50 states, the District of Columbia, and three U.S. territories about U.S. residents regarding their health-related risk behaviors, chronic health conditions, and use of preventive services. BRFSS estimates of obesity, binge drinking, smoking, chronic disease, and activity limitations are available on SHADAC's [State Health Compare](#) for all states and can be viewed by educational attainment and race/ethnicity.

Now Available: National, State-level, and Metro Area Data from 2018 MEPS-IC

The Agency for Healthcare Research and Quality (AHRQ) released [national estimates](#) and [state and metro area estimates](#) from the 2018 Medical Expenditure Panel Survey – Insurance Component (MEPS-IC) on private sector employer-sponsored insurance (ESI) coverage, premiums, and deductibles. [Estimates](#) for 2018 showed national average premiums for both single and family coverage approaching record highs, at \$6,715 and \$19,565, respectively. Nationwide, enrollment in high-deductible health plans (HDHPs) also continued its steady climb, with 49.1 percent of workers with ESI enrolled in this type of coverage plan in 2018, up from 48.7 in 2017.

State Health Compare Updates

SHADAC's [State Health Compare](#) web tool has been updated to include the latest 2018 MEPS-IC data. National and state-level estimates for the years 2002 to 2018 are available for the following [indicators](#): Workers in establishments that offer coverage, average annual ESI premium, employee contributions to premiums, and high-deductible health plans. State Health Compare has also added a new measure this year, average annual ESI deductible, for which data is available from 2002-2018.

Additional News

2019 Colorado Health Access Survey (CHAS) Findings Released



The Colorado Health Institute presented results from the [2019 Colorado Health Access Survey](#) this past Wednesday, September 25th. Major findings from the biennial survey showed the state maintaining health insurance coverage gains from 2013 onward, with uninsurance rates remaining steady at 6.5% in 2019, employer-sponsored insurance (ESI) continuing as the largest source of coverage for Colorado residents (up from 49.4% in 2017 to 52.7% in 2019), and decreases found in Medicaid coverage (19.9% in 2017 to 18.7% in 2019) and individual insurance coverage (8.1% in 2017 to 7.0% in 2019).

Policy Forum: Combating Minnesota's Opioid Epidemic



On Thursday, October 24, the University of Minnesota Carlson School's [Medical Industry Leadership Institute](#), along with a number of public health organizations including SHADAC, will be hosting a one-day policy forum to discuss how public and private stakeholders in the state can build on current efforts to combat the opioid epidemic. Speakers at the forum will include federal, state, local, and tribal policymakers, as well as individuals from health and recovery systems, and payers. Learn more and register to attend the conference [here](#).

Recommended Reading

[Uninsured Rate Rose in 2018, Says Census Bureau](#)

Katie Keith, Health Affairs blog

[2018 ACS: National Uninsurance Increased alongside Eight States; Three States Saw Decreases \(Infographic\)](#)

SHADAC blog

[2018 ACS: Public Coverage Changes Split Evenly Among States, Private Coverage Changes Experience Greater Variability than in 2017](#)

SHADAC blog

[Benchmark Employer Survey Finds Average Family Premiums Now Top \\$20,000](#)

Craig Palosky, Kaiser Family Foundation and Sue Ducat, Health Affairs

[A Deeper Dive on Employer-sponsored Health Insurance: Costs in Five States in Comparison with the United States \(Infographics\)](#)

SHADAC blog

[Forward to a friend.](#)

[unsubscribe from this list](#) | [update subscription preferences](#)

Copyright © 2019 University of Minnesota
SHADAC, 2221 University Avenue SE, Suite 345, Minneapolis, MN 55414